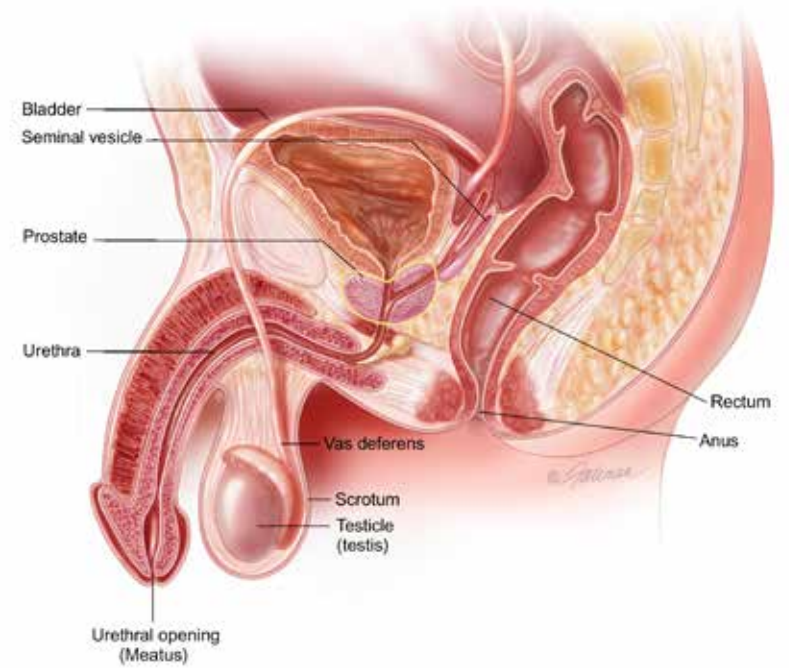
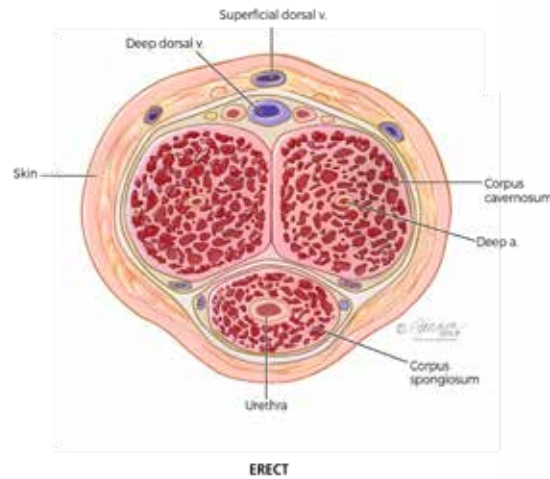
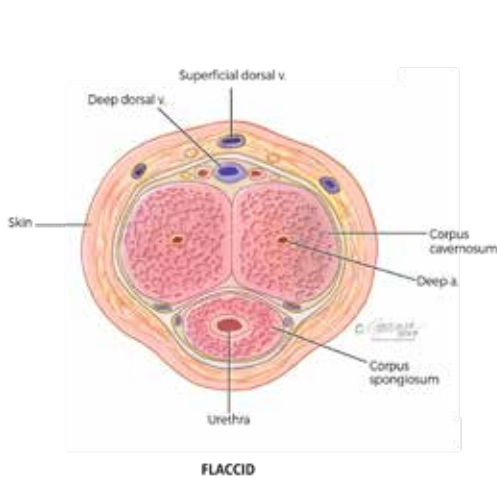


How Does the Reproductive System Work?

For men, urology includes the urinary tract and the male reproductive organs, or, you could think of them as the systems below the belt.

REPRODUCTIVE SYSTEM OVERVIEW

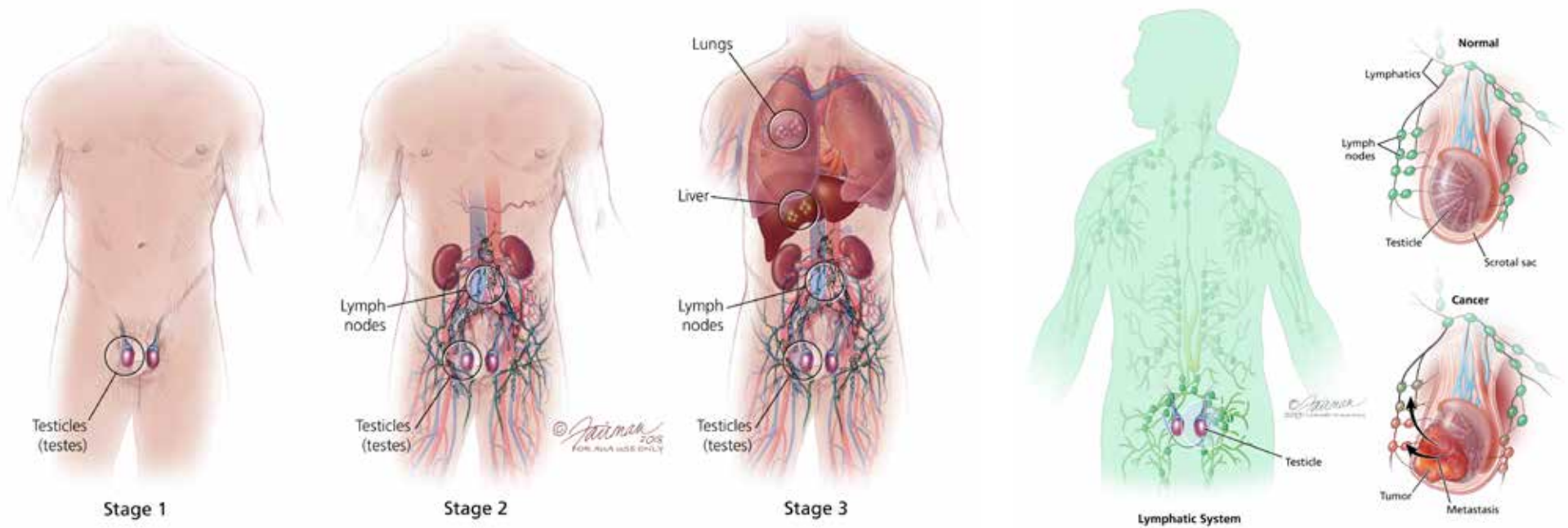


Notes:

Testicular Cancer happens when cells in the testicle grow to form a tumor. This is rare. Most testicular cancers begin in the germ cells, which produce sperm.

Penile Cancer happens when cells in the penis grow to form a tumor. This is rare.

TESTICULAR CANCER



Notes:
